

**To review Wayfinding options and consider any actions**

Information:

Nine Wayfinding columns have been identified in the following locations in the town centre area, leading down to the Waterside:





Figure 1 - Jubilee Pontoon 50.409309, -4.206452



Figure 2 - Silverstreet 50.407430, -4.207594



Figure 3 - Banking Hub Corner 50.408589, -4.210279



Figure 4 - Station 50.407532, -4.209016

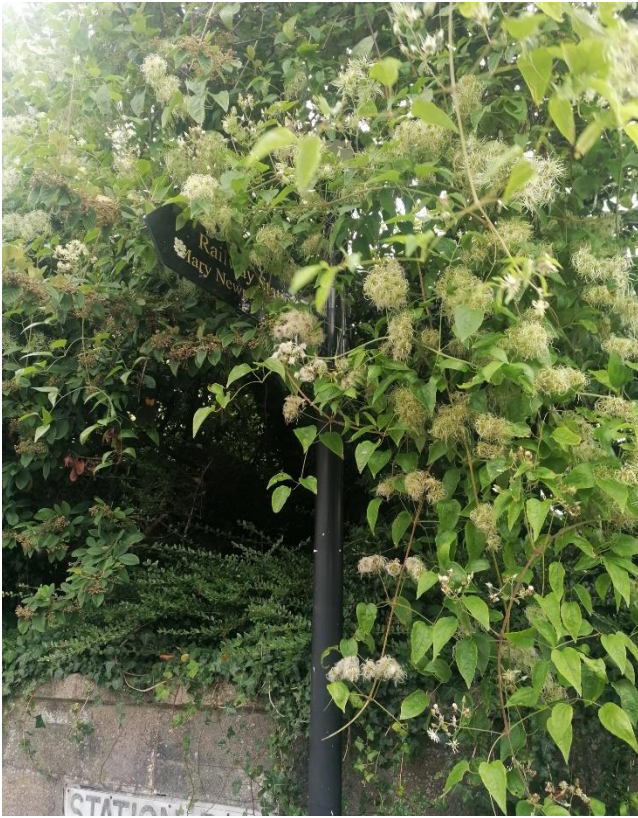


Figure 5 – Station Road 50.406979, -4.210043



Figure 6 – Waterside WC 50.407853, -4.206024



Figure 7 – Culver Road 50.406917, -4.209906

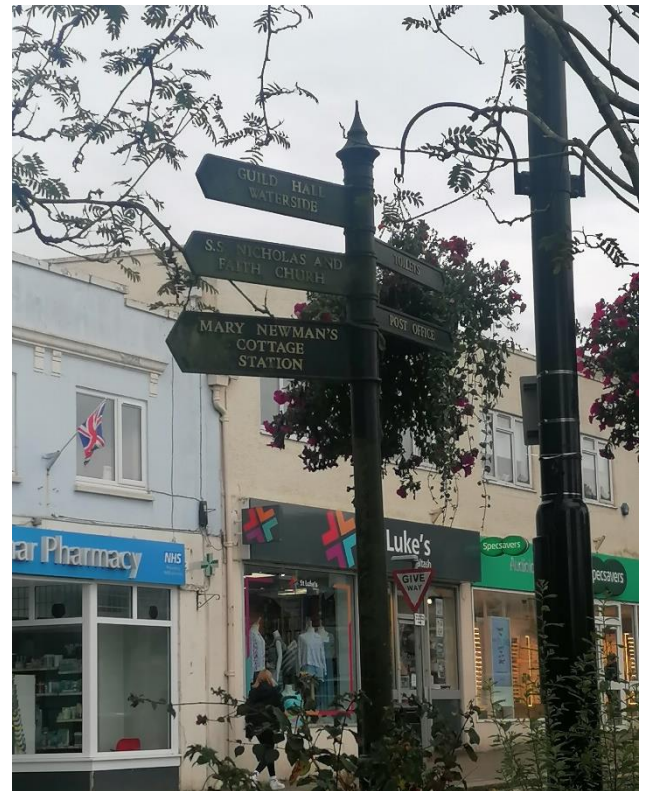


Figure 8 – Banking Hub (2) 50.408585, -4.210260



Figure 9 – Lower Fore Street 50.408470, -4.209484

Town Team members should clearly define their objectives for the wayfinding signs on Fore Street.

Once these objectives are set, further investigation can be conducted to identify appropriate locations for sign relocation if necessary, and to estimate the associated costs for consideration by the team.

This process will also enable the Town Council to review wayfinding signage and follow a consistent format for use in broader areas.

**End of report**  
**Administration Officer**