
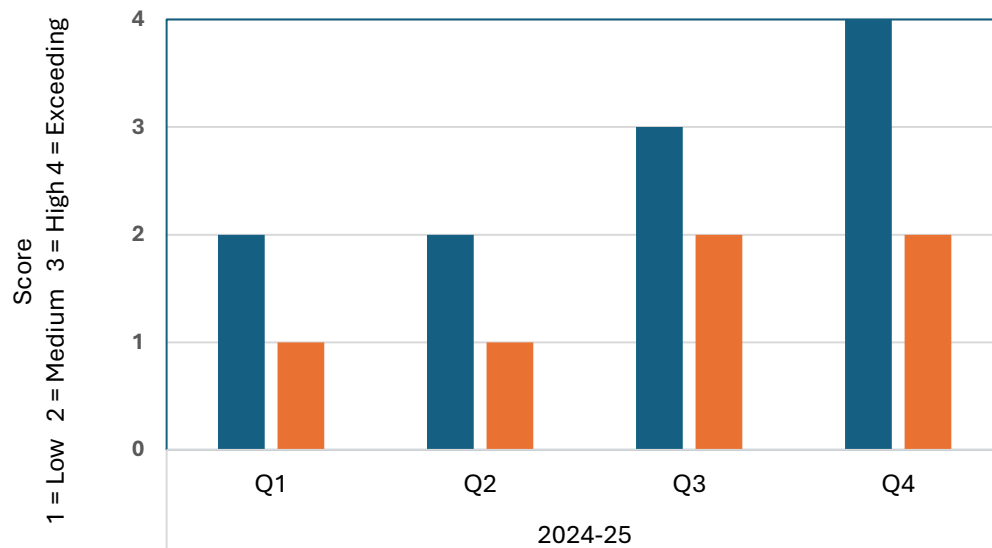


Strategic Priority 1 - Boosting Jobs and Economic Prosperity		Aims of the Station Sub Committee	What does success look like?	Actions	Live Score (1 = Low 2 = Medium 3 = High 4 = Exceeding)	2024-25			
						Q1	Q2	Q3	Q4
	To ensure Saltash benefits from higher income, reduced poverty, improved facilities and quality of life. Promote Saltash as a vibrant and welcoming visitor destination.	Promote Saltash as a vibrant and welcoming visitor destination with provisions of Isambard House café and waiting room area	Enhance visitor experiences  Maintain, promote, support and secure a concessionaire for Isambard House Cafe and Waiting Room	Offer reduced rates to community organisations and tourism attractions  Organise events and activities at Isambard House such as live music, art exhibitions, and themed nights  Secure a cafe concessionaire to operate the Station Cafe and waiting room by offering reduced rent and utilities  Support and promote the Station Cafe to ensure the waiting room and accessible facilities remain open  Utilise social media platforms and the Town Council website to promote Isambard House facilities and refurbishment  Supporting additional Trackside Cafe hours on a Saturday to accommodate the need  Succesful Murder Mystery event held in Nov at Isambard House  CC hiring Isambard House Oct-Feb for English lessons for Afghan refugees  <b>Free use of station car park to those attending the Repair Cafe operated at St Nicholas and St Faith Church</b>  <b>A further Murder Mystery Event promoted and well attended in February</b>  <b>Continued partnership working with Trackside Cafe ensuring the waiting room and accessible facilities remain open</b>	4	2	2	3	4
		Bring in additional investment by offering a focal meeting point at the Station and in close proximity to Fore Street	Improved marketing and promotion  Collaborate with local businesses and attractions	Utilise social media platforms and the Town Council website to promote Isambard House facilities and refurbishment  Support and promote vistor attractions such as the Heritage Centre and Trails, Mary Newmans Cottage and Elliot Store  Service Delivery clearing the beds and cutting back hedging to make the area neat and tidy at Saltash station  <b>Collaboration with key stakeholders to deliver an event for Rail 200 (early planning stage)</b>	2	1	1	2	2


**Business Plan**  
**Strategic Priority 1 - Boosting Jobs and Economic Prosperity**  
**Aims of the Station Sub Committee**



- Promote Saltash as a vibrant and welcoming visitor destination with provisions of Isambard House café and waiting room area
- Bring in additional investment by offering a focal meeting point at the Station and in close proximity to Fore Street

Strategic Priority 2 - Health and Wellbeing		Aims of the Station Sub Committee
	<p>To support the Saltash Healthcare Action Group in improving our local NHS provision. Support improvement to mental health, fitness facilities, educational wellbeing of children and opportunities to access a high level of quality learning for young people.</p>	<p>The Station Property Sub Committee recognised strategic priority 2 - Health and Wellbeing did not fit within the remit (Terms of Reference) of the sub committee</p>

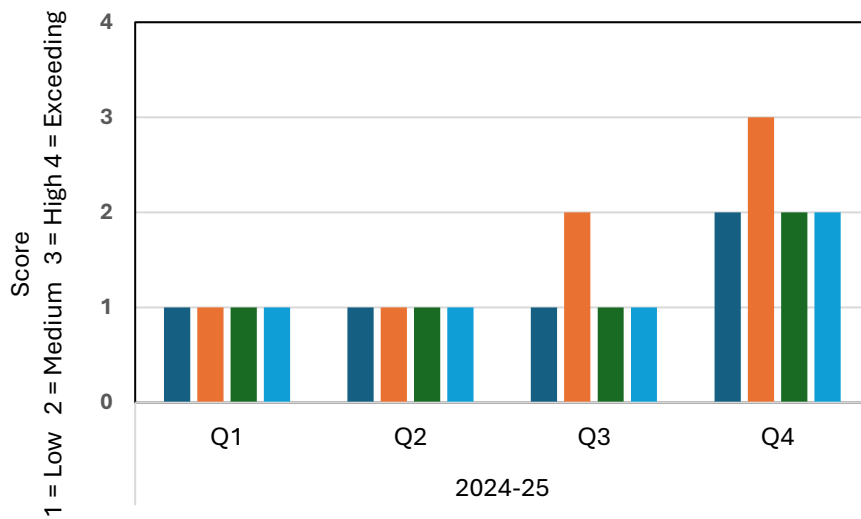
Strategic Priority 3 - Housing		Aims of the Station Sub Committee
	To ensure Saltash has a balanced range of high quality and affordable housing by working in partnership with Cornwall Council	The Station Sub Committee recognised strategic priority 3 - Housing did not fit within the remit (Terms of Reference) of the committee

Strategic Priority 4 - Travel and Transport		Aims of the Station Sub Committee	What does success look like?	Actions	Live Score (1 = Low 2 = Medium 3 = High 4 = Exceeding)	2024-25			
						Q1	Q2	Q3	Q4
	To work with key stakeholders to support access to affordable, accessible and sustainable transport in Saltash and the rural and urban areas, and promote walking and cycling.	Promote Saltash as a vibrant and welcoming visitor destination with provisions of Isambard House café and waiting room area	Enhance wayfinding  Promote sustainable travel options  Improved infrastructure to create a welcoming and vibrant Station building and surroundings  Work with key stakeholders for future funding opportunities for future improvements	Install clear and directional signage to the Town Centre and local attractions inclusive of sustainable travel options  Encourage the use of Beryl bikes, Saltash Red Bus and the Saltash ferry by promotion  Secure a Service Level Agreement with GWR and work in partnership with local voluntary organisations, together both enhance the green areas ensuring the station is a welcoming, attractive and bright place to visit  <b>Working in partnership with Town Team to install improved wayfinding in Fore Street</b>  <b>Continued Social Media advertisements</b>	2	1	1	1	2
		Saltash Station is a key transport hub to the town	Improved train connectivity to neighbouring towns and cities  Improved train accessibility at Saltash Station  Ensure Saltash station provides sustainable travel options connecting users and visitors to the Town Centre and further afield  Saltash Neighbourhood Development Plan	Refer to the Saltash Neighbourhood Development Plan on guidance to sustainable transport  Request install of Beryl bikes at the station building  Request Saltash Red Bus stops at the station building to coincide with train arrival/departures  Advocate for improved train timetable  Increase train stops at Saltash Station  Working in partnership with key stakeholders, such as, Local MP, Cornwall Councillors, Network Rail, GWR, to achieve actions  STC endorsed the draft 'case for better rail services' and support the 'Saltash platform train interface improvements' to work with train operating companies to bring both reports to fruition over the coming years  <b>Funding bid submitted against GWR Customer and Community Improvement Fund - FTC held 6.2.25 Minute nr 350/24/25</b>  <b>Supported response to Peninsular Transport Strategic Implementation Plan (providing better transport services) - FTC 378/24/25</b>  <b>The Mayor raised accessibility awareness on Spotlight - Feb 2025 workingn with local residents</b>	3	1	1	2	3
		Embark on a community project for the installation of further connectivity by installing EV Charging Points, Beryl Bikes and Solar Car Ports and Roof within the Station car park	Install EV Charging Points in the Station Car Park  Beryl bikes to be available for use at the station building	Investigate and implement where possible EV charging points at Saltash station  Improved car park facilities - invest in the car park resurfacing and safety to improve the levels for users to access  Work in partnership to install Beryl bikes for community and visitor use  Research solar car ports and roof for Isambard House car park  Resurface the car park to improve access for users  <b>Beryl Bikes remain at Isambard House following a recent review of the service</b>  <b>Funding bid submitted for solar PV.</b>	2	1	1	1	2
		Continue to support and promote the towns 450 local bus service providing better connectivity	Work in partnership with Saltash Red Bus  Secure an additional stop / improved route to Saltash station building	Promote the 450 services via the Town Council website, social media platforms and press releases  Offer a stall at the Library Hub and Meet your Cllr Sessions to promote the bus service  Bus times - Transport for Cornwall which covers six operators displayed in the leaflet rack at Trackside Cafe  <b>Assistance provided to Red Bus regarding funding opportunities</b>	2	1	1	1	2

## Business Plan

### Strategic Priority 4 - Travel and Transport

#### Aims of the Station Sub Committee




■ Promote Saltash as a vibrant and welcoming visitor destination with provisions of Isambard House café and waiting room area

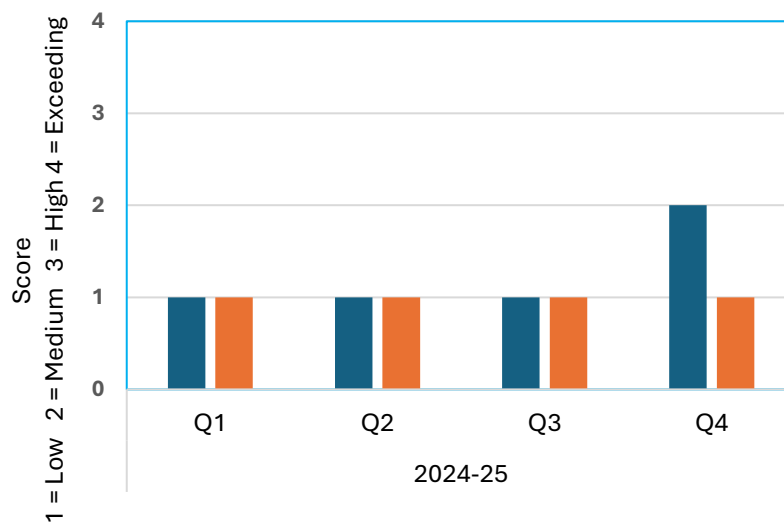
■ Saltash Station is a key transport hub to the town

■ Embark on a community project for the installation of further connectivity by installing EV Charging Points, Beryl Bikes and Solar Car Ports and Roof within the Station car park

■ Continue to support and promote the towns 450 local bus service providing better connectivity


Strategic Priority 5 - Climate Emergency		Aims of the Station Sub Committee	What does success look like?	Actions	Live Score (1 = Low 2 = Medium 3 = High 4 = Exceeding)	2024-25			
						Q1	Q2	Q3	Q4
	To continue to acknowledge a climate emergency and to bring forward a local climate change strategy.	To continue to support external groups with free use of Isambard House (in line with the Hire Policy) where their purpose is climate change and environmental matters	<p>Hold successful community climate change events throughout the year</p> <p>Support the free use of Isambard House for Climate Change initiatives, workshops and community information</p>	<p>Review the Town Council's existing Hire Policy and ensure that the criteria for free use clarifies support for groups involved in climate change and environmental matters.</p> <p>Reach out to climate change and environmental organisations to promote support and use of facilities at Isambard House.</p> <p><b>Provided SEA free use of Isambard House to host a film night - climate scam</b></p>	2	1	1	1	2
		To lead by example by Isambard House being well insulated when refurbished with further investments to install Solar PV and Water Systems to assist in reducing energy bills and Co2 emissions	<p>Invest and install Solar PV</p> <p>Invest and install solar water systems</p> <p>Reduction in energy bills and Co2 emissions</p> <p>Saltash Neighbourhood Development Plan</p>	<p>Refer to the Saltash Neighbourhood Development Plan for guidance on efficient buildings and low-carbon heating</p> <p>Assess the needs and goals the Town Council wish to achieve with installing solar PV and water systems</p> <p>Research the types of solar PV and water systems that may be suitable to the needs and goals</p> <p>Assess site suitability</p> <p>Monitor and assess energy bills and Co2 emissions</p> <p>The sale of slate tiles from the fixtures of the original building (Isambard House) to be used by a member of the public on a project. Recycling rather than sending to landfill</p>	1	1	1	1	1

**Business Plan**  
**Strategic Priority 5 - Climate Emergency**  
**Aims of the Station Sub Committee**

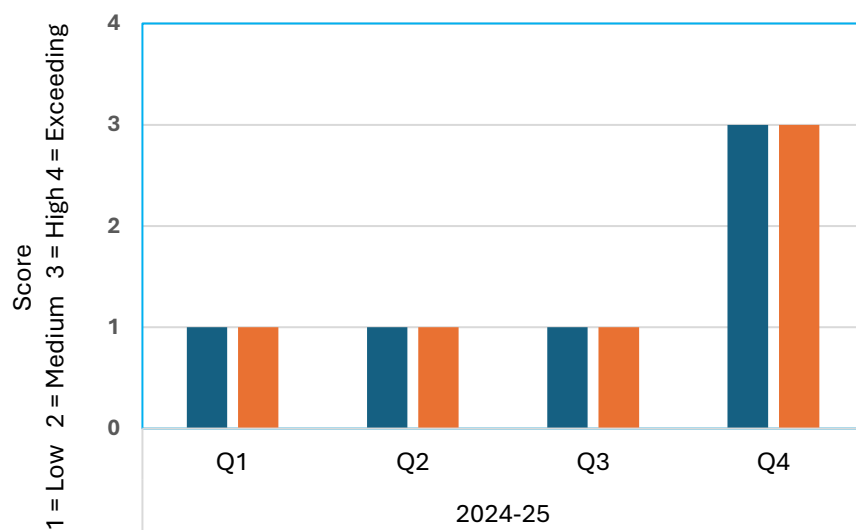


- To continue to support external groups with free use of Isambard House (in line with the Hire Policy) where their purpose is climate change and environmental matters
- To lead by example by Isambard House being well insulated when refurbished with further investments to install Solar PV and Water Systems to assist in reducing energy bills and Co2 emissions



Strategic Priority 6 - Recreation and Leisure		Aims of the Station Sub Committee	What does success look like?	Actions	Live Score (1 = Low 2 = Medium 3 = High 4 = Exceeding)	2024-25			
						Q1	Q2	Q3	Q4
	To continue to provide, improve, and support in Saltash, play parks, open green speaces, library service, cultural acitivity, leisure and support facilities, and to acknowledge our unique position on the Tamar and Lynher Rivers.	Increase cultural activity by providing a restored historical building (Isambard House) to hold events offering low rates to hire the building	Increased cultural activities at Isambard House  Increased event hire  Improved promotion of the historical nature and restoration of Isambard House	Effective promotion and advertising of the station building and its restoration  Host community events which are free or low-cost that offer an invitation to local residents to explore and enjoy the building  Maintain an engaging website and social media profile with regular updates, photos, and event announcements  Installed high end kitchen to improve the facility to hirers  <b>Provided SEA free use of Isambard House to host a film night - climate scam (we recognise this action also meets strategic priority 5)</b>  <b>A further Murder Mystery Event promoted and well attended in February (we recognise this action also meets strategic priority 1)</b>  <b>CC hiring Isambard House Jan-Feb for English lessons for Afghan refugees (we recognise this action also meets strategic priority 1)</b>  <b>Collaboration with key stakeholders to deliver an event for Rail 200 (early planning stage) (we recognise this action also meets strategic priority 1)</b>	1	1	1	1	3
		Create an annual events calendar to better utilise the building	A fully operational and cohesive events calendar  Improved promotions and outreach and communications	Maintain an engaging website and social media profile with regular updates, photos, and event announcements  Plan a mix of events incorporating historical holidays, community festivals and art exhibitions	1	1	1	1	3

**Business Plan**  
**Strategic Priority 6 - Recreation and Leisure**  
**Aims of the Station Sub Committee**



- Increase cultural activity by providing a restored historical building (Isambard House) to hold events offering low rates to hire the building
- Create an annual events calendar to better utilise the building